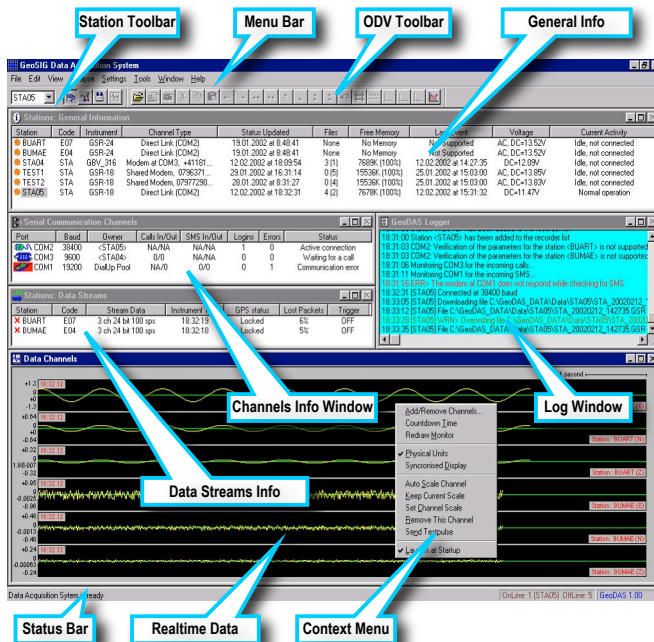


## GeoDAS Software



GeoDAS software is a graphical Microsoft Windows-based application running under Windows 98 / NT4 / 2000 / XP / Vista / 7 / 8. Special wrapper applications can be used to enable many features of the GeoDAS to run under Linux, MAC OS, Unix and other operating systems as well.

GeoDAS, when compared to any similar application, provides the most comprehensive, intuitive and versatile features available in the earthquake, seismic, structural, dynamic and static monitoring and measuring industry.

### General Tasks

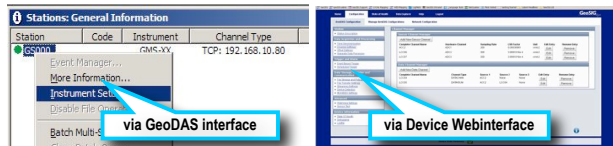
- Instrument, Network and System setup
- State of Health (SOH), logging and permanent or periodical monitoring of instrument/system status
- Communication links administration and monitoring supporting SEEDlink and GSBUS datastreams
- Real-time data viewer and recorder
- File manipulation and format conversion into ASCII, SUDS, SAC, SEISAN, ARTeMIS, MATLAB
- Off-line data viewer, basic data analysis

### Data Analysis (OPTIONAL)

- Lowpass Filter
- Highpass Filter
- Baseline correction
- Integration
- Differentiation
- Vector Sum
- Cumulative Absolute Velocity (CAV)
- Time-domain Filtering
- Effective Values
- Damping
- Power Spectra
- FFT Magnitude
- Terzband Spectra
- Response Spectra
- JMA Intensity
- STA/LTA Ratio
- Signal Characteristics
- Analysis Templates

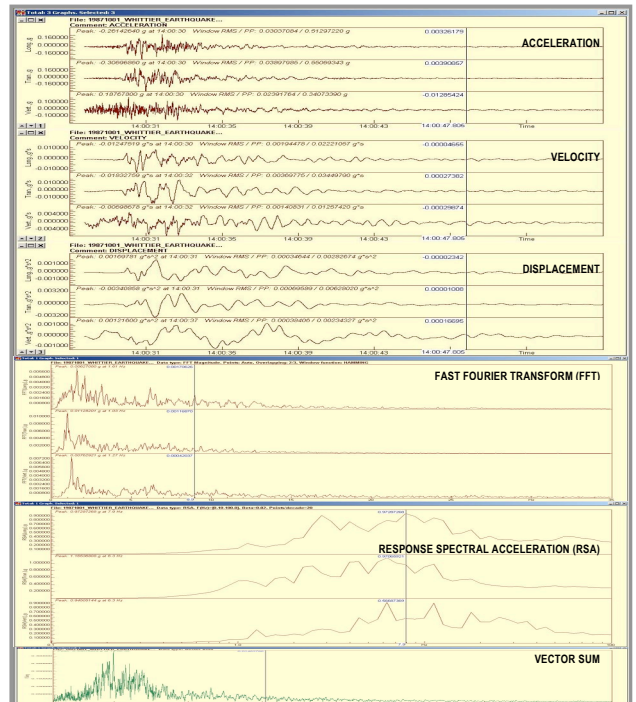
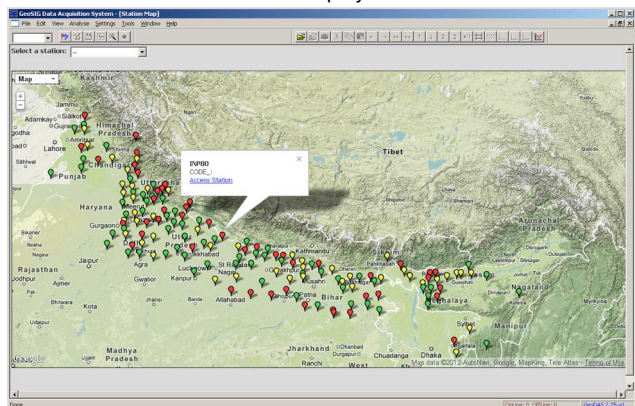
GeoDAS has been designed to meet requirements with respect to almost every possible application and can integrate/interact with many other software.

### Versatile Instrument Setup



### Station Map (OPTIONAL)

GeoDAS can display the configured stations on a googlemap or on a built in fixed image with associated coordinates. If configured and available, each station's setup / web interface is directly accessible from this map screen. The state of health of the associated station can also be displayed in a colour code.



### Other Capabilities

GeoDAS offers also special functions, which is required for particular applications or be activated in special cases

- Strong Motion Data Processing
- OBE / SSE Event Checks & Reports
- Support for ADC Boards
- Post-processing, reporting, notification
- Static Measurements, Rainflow counting
- Automatic Event Processing
- Automatic File Conversion to special formats
- Customer specific file and stream handling