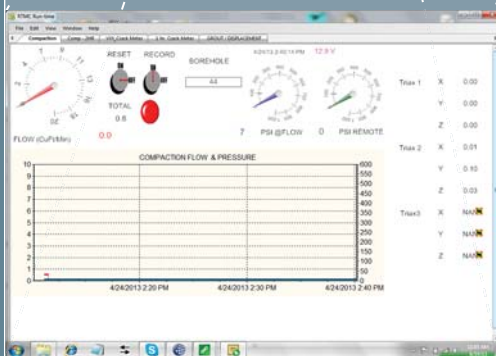
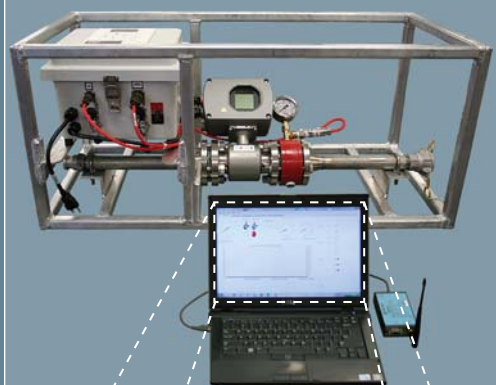
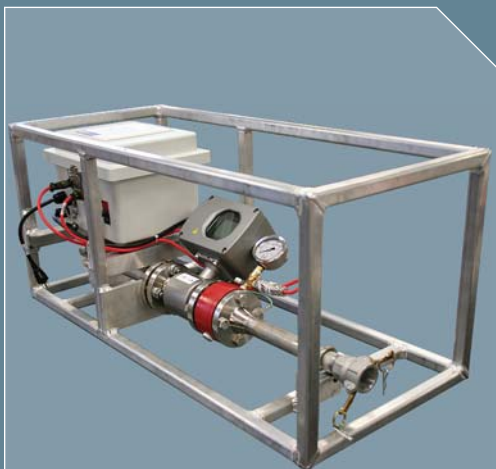




Permeation Grout Monitor



Screenshot of Real-time Monitoring Software

The RST Permeation Grout Monitor System provides operators and engineers near-real-time display of key grouting parameters to enhance the understanding of site conditions.

It is invaluable in providing a permanent record of key grouting parameters for quality assurance, documented quantities and pressure readings.

The datalogger incorporates a radio that transmits data to a portable computer on which an operator can visualize displays of real-time and historical injection pressure and flows. The user-friendly software allows for displaying the trending graphs of pressure and flow, as well as other graphs associated with grouting theories and practices.

flow specifications

PIPE SIZES (INCHES)	MINIMUM VOLUMETRIC RANGE (GAL/MIN)	MAXIMUM VOLUMETRIC RANGE (GAL/MIN)
1.0"	0.782	78.00
2.0"	3.122	310.0

ITEM	DESCRIPTION
Temperature	-20°C to 85°C (-4°F to 185°F)
Dissolved/suspended Solids	0 - 40%
Accuracy	±1% above 1 CFS (after on-site calibration)
Pressure Transducer	0 - 500 PSI 0.25% FSO (other options available)

logger specifications

ITEM	DESCRIPTION
Storage	1 million readings standard (optional up to 2 GB)
Data File	Comma delimited ASCII data file for post processing in Excel® or other 3rd party software
Real Time Graphical Display (English or SI Units)	Pressure, Flow, Injected Volume, Site Specific Information, Apparent Lugeon, Penetrability Control, GIN, etc.

ordering info

ITEM	PART #
1.0" Permeation Grout Monitoring System	ELGL7000
2.0" Permeation Grout Monitoring System	ELGL7002



RST Instruments Ltd.
11545 Kingston St.,
Maple Ridge, BC
Canada V2X 0Z5

Telephone: 604 540 1100
Facsimile: 604 540 1005
Toll Free: 1 800 665 5599

info@rstinstruments.com

www.rstinstruments.com

applications

Provides the operator with a display of key grouting parameters to enhance near-real-time understanding of the grouting process.

Provide a permanent record of key grouting parameters for quality assurance; documented quantities, accessible in standard software such as Microsoft® Excel.

features

- Non-invasive.
- Electromagnetic flowmeter.
- Low maintenance diaphragm seal for analog and digital pressure gauge protection.

display features

- Digital flow and analog pressure on monitor.
- Near-real-time computer display.
- Customizable display and recording options:
 - Pressure
 - Flow
 - Injected Volume
 - Site Specific Information
 - Apparent Lugeon
 - Penetrability Control
 - GIN
- etc.

Battery operated and rechargeable.

All displays in English or SI units.

system features

No cable - spread spectrum 900 MHz wireless to computer base station.

Unattended automatic monitoring if desired.

Excel® is a registered trademark of Microsoft Corporation in the United States and/or other countries. RST Instruments Ltd. reserves the right to change specifications without notice.