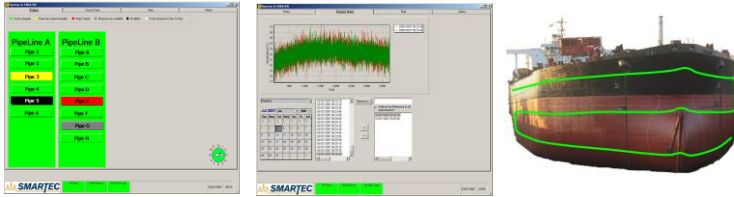


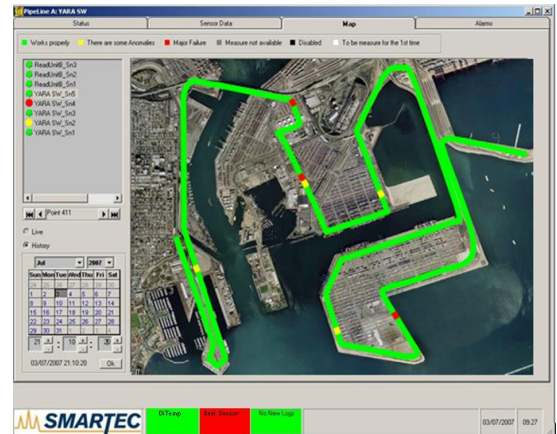
# 20.2010 DIVIEW SOFTWARE

Distributed Data Management and Analysis Software



## GENERAL DESCRIPTION

The Distributed Data Management and Analysis Software DiView is an integral and fully compatible part of SMARTEC distributed monitoring systems. In particular, it is designed for data storing, processing, representation and analysis, as well as for the control of single or multiple DiTeSt and DiTemp reading units. DiView is also used to store and manage data in a centralized interface.



## TECHNICAL DESCRIPTION

The main functions of DiView software are aimed to measure sensors automatically. The operator can view in real time the sensor's measurement history in graphical form. Software is also able to trigger alerts (SMS, mail and phone call) and show warnings on the display. Warnings can be generated for different types of events, including: Strain, Temperature, Leakage and Crack. The software is able to combine measurements from different sensing cable, to obtain complex results, such as temperature compensated strains. An optional module is dedicated to the detection of leakages from pipelines, dikes, reservoirs and other similar structures, by identification of local temperature anomalies. Another optional module is dedicated to the detection of crack from distributed strain data. The DiView software and the additional module offer numerous configurable parameters and options. SMARTEC offers parameterization and customization services.

The software stores all information related to a sensor in a single database structure. All data can be easily exported to third-party software included MS Excel and MS Access. Multiple users can access the software simultaneously from different PC (locally or remotely over a modem or LAN).

## FEATURES

- Real-time measurement analysis of single and multiple distributed sensors
- Fully compatible with SMARTEC distributed monitoring systems (DiTeSt and DiTemp)
- Automatic and scheduled measurements
- All project parameters stored in a relational database
- Direct sensor history display
- Leakage detection module
- Crack detection module
- Alarm triggering
- Voice message, email, SMS, acknowledge via SMS
- Remote connection and assistance

## MAIN FUCTIONS

<b>Measurement functions</b>	Measurements of SMARTEC distributed monitoring systems (DiTeSt and DiTemp) and sensors. Results storage in text files.
<b>Display functions</b>	Map view, Alarm view, Measures view, Historical view, others upon client's request
<b>Optional modules</b>	Crack detection Leakage detection, Warning and information messages (Voice message, Email, SMS, SMS acknowledge)

Distributed Data Management Software requires Windows NT™ or XP to run. Microsoft Excel™ and Microsoft Access™ are recommended to export the data for further analysis and representation, and to configure the setup database.

## DISTRIBUTED DATA MANAGEMENT SOFTWARE SCREENSHOT

Measurement view

Sensor List

Reference view tool

History window

## ORDERING INFORMATION